

These test results are for Research and Development purposes only

Page 1 of 1

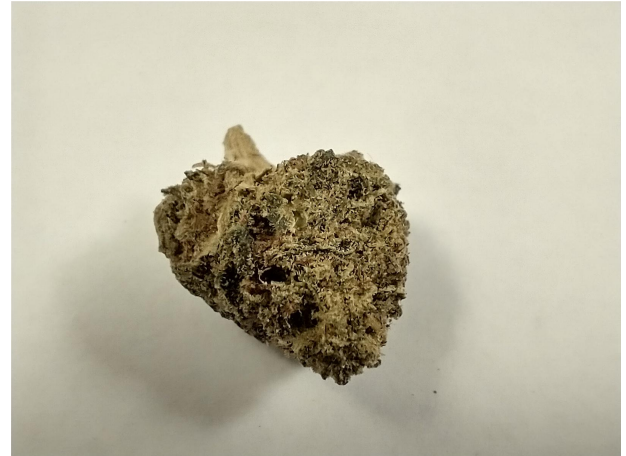
HWF

Sample Sherbert Banger

Strain

0.24%	1.81%	33.91%
$\Delta 9$ THC	Total CBD	Total Cannabinoids
Not tested	Pass	339.1
Water Activity	5.12	mg / g Total Cannabinoids
	Moisture	

Sample ID **24070840404**



Harvest/Prod Date

Report Created **7/16/2024**

Results Valid Until

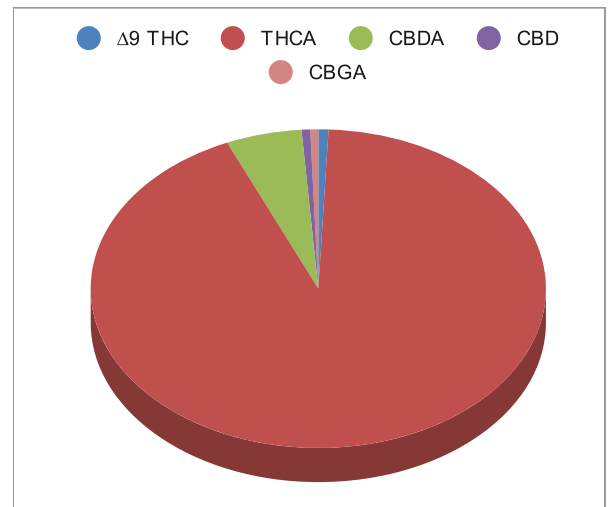
7/17/2025

Sample Extracted
7/15/2024 12:15:00

Sample Analyzed
7/15/2024 15:04

Method SOP LO001-R11


Cannabinoids	%Weight	mg/ gram	LOQ(% /w)
$\Delta 9$ THC	0.24	2.4	0.06
THCA	31.44	314.4	0.06
Total THC (THCA*0.877)+9THC	27.82	278.2	0.06
CBDA	1.82	18.2	0.06
CBD	0.21	2.1	0.06
CBN	<LOQ	<LOQ)	0.06
$\Delta 8$ THC	<LOQ	<LOQ)	0.06
CBC	<LOQ	<LOQ)	0.06
CBGA	0.19	1.9	0.06
CBG	<LOQ	<LOQ)	0.06
CBDV	<LOQ	<LOQ)	0.06
CBDVA	<LOQ	<LOQ)	0.06
THCVA	<LOQ	<LOQ)	0.06
CBDQ	<LOQ	<LOQ)	0.06
HHC	<LOQ	<LOQ)	0.09



Total THC and Total CBD are calculated values per OAR 333-064-0100. Cannabinoid values for plant matter samples are reported on a dry weight basis. Water activity action level is 0.65Aw. LOQ= Limit of Quantitation. NR=Not Reported.

Rogue Research Lab LLC
Rogue River, OR 97537 Tel. 541-582-1962

rogueresearchlab.com


 Craig Berry - Lab Director
 7/16/24

Results pertain to submitted samples only. Rogue Research Lab LLC makes no claims as to the consumer safety or other risks associated with any detected or non-detected amounts of any pesticides, solvents or other adulterants. This report shall not be reproduced, unless in its entirety, without written approval from Rogue Research Lab LLC. Samples were received in good condition and all QC samples met acceptance criteria of the method; data available upon request. For informational purposes only.